



SOCIAL LEARNING SPACES

**OPTIMISING
THE LEARNING
EXPERIENCE.**

AGILE METHODOLOGY + FLEXIBLE LEARNING SPACES

The younger generations have long been calling for a paradigm shift in education and a reshuffle of the classroom. The current health crisis has only accelerated this process. A connection between what pupils study in the classroom and what their future employers are seeking is increasingly necessary.

Traditional models have been made obsolete by the rise of new technology and the new methods of communication that have ensued. Furthermore, the labour market is starting to request innovative thinking, problem-solving as a fundamental skill, and accordingly, the necessary creativity to deliver it, as opposed to knowledge.

CREATE

dynamic learning zones.
Spaces that encourage
movement result in happier,
healthier, ad smarter
students.



Cited from Actiu
<https://www.actiu.com/en/articles/news/design-of-new-education-system/>

Single-purpose, rigid spaces are giving way to multifunctional, horizontal, integrated, and flexible spaces.

The layout of the classroom is no longer an issue of style or simple practicality. The way in which it is set up has a profound effect on the type of communication that takes place between teachers and students, between the students themselves, and learning. It will depend on the teaching method in place, but also on the interpersonal and social hierarchies sought by the layout of the furniture in the classroom.



Studies show that over 70% of learning by students take place outside of the formal setting of the classroom.

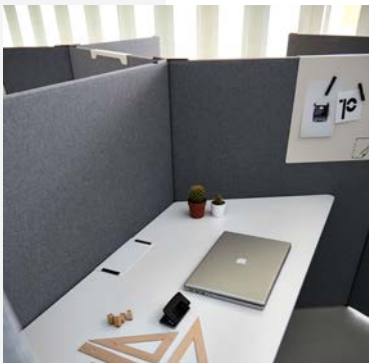
This highlights the critical role of spaces in the learning process and, particularly, more informal and shared spaces. Libraries, hallways, reception areas, outdoor playgrounds, canteens, and others, become spaces for creation and trial and error. Emerging spaces that grant students the opportunity to come together based on their interests and provide them with the tools and materials they need to put them into practice.

Cited from Actiu
<https://www.actiu.com/en/articles/news/design-of-new-education-system/>

INDIVIDUAL WORK PODS

LINK
LEAD TIME - 10-15 WEEKS

Freestanding screen on castors for receiving TV/monitor up to 65" and with a maximum load of 35kg including power frame for integrated connectivity. It can be offered in melamine finish or fully upholstered, providing in turn a sound-absorbing solution.





SOCIAL LEARNING SPACES

TWIST GEN LEAD TIME - 10-15 WEEKS

GEN is the new concept for offices looking towards the future. Space optimisation, collaboration and the proximity of the user are the purposes of this product. Desks can also be connected getting visually more fluid offices.

Due to the impact of technology on the new ways of working nowadays, Twist video conference offers a digital meeting point where meetings or training sessions can take place.



E-FIT LEAD TIME - 10-15 WEEKS

flexible backrest and back support. The innovative design of the backrest, made from polypropylene and glass fibres, adapts to the movements of the user, assisted by the automatic adjustment of the built-in back support which helps to provide a high level of comfort.



NOOM FAMILY

LEAD TIME - 4-6 WEEKS

Noom has been created to humanize spaces, with a friendly, elegant and differentiated design. It is designed to promote communication and transmit well-being, indispensable in everyday life.

Noom fits into very different environments and moments, thanks to its high customisation capacity.



SERIES 10

SERIES 20

SERIES 40 SERIES 30

AGILE COLLECTION



GRADA LEAD TIME - 10-15 WEEKS

The Grandstand allows the space to be redesigned thanks to its modularity and the incorporation of wheels. It offers each team the possibility of adapting its space to the work methodology and needs at any given time, so it can be configured as a bench, platform or shelf.



CADDY 500

LEAD TIME - 10-15 WEEKS

Freestanding screen on castors for receiving TV/monitor up to 65" and with a maximum load of 35kg including power frame for integrated connectivity. It can be offered in melamine finish or fully upholstered, providing in turn a sound-absorbing solution.

Flat screens are easily installed in the Caddy through the VESA perforations that are built into the surface by minimizing the mounting depth of the monitor. It offers different solutions and accessories which provide the product of a maximum functionality; such as cable hangers, integrated portholes on the back panel or even optional cable trays.

COLLABORATIVE SPACES

Areas that enable students to collaborate effectively foster their ability to adapt and adjust to different environments. It enhances their social skills that will improve their relationship with others.



LONGO LEAD TIME - 10-15 WEEKS

Freestanding screen on castors for receiving TV/monitor up to 65" and with a maximum load of 35kg including power frame for integrated connectivity. It can be offered in melamine finish or fully upholstered, providing in turn a sound-absorbing solution.



FLIP TABLES

The answer to modern and adaptable learning environments



QUATTRA FLIP LEAD TIME - 4-6 WEEKS

Easily configured in different layouts limited only by your imagination, the possibilities are endless. Quattrra can be effortlessly moved and stored when not in use.

Available in two sizes for 1 Person & 2 Person.





SOCIAL LEARNING SPACES



TALENT 300 LEAD TIME - 10-15 WEEKS

Talent is a mobile, foldable and height-adjustable desk system that doesn't need any electrical connection. Its quality and safety - guaranteed by the German GS (Geprüfte Sicherheit) certification.

The versatility of the programme creates easily installable learning environments. It adapts to the needs of each moment, standing out thanks to its functionality, easy storage, maintenance and care by the users.

SUPER-STACKABLE CHAIRS

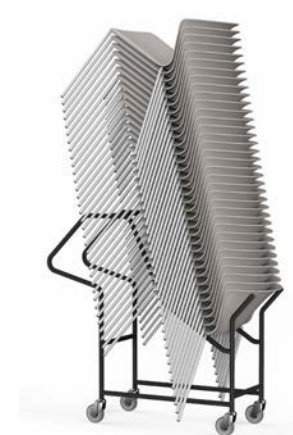


WHASS

LEAD TIME - 10-15 WEEKS

With an informal and elegant profile, Whass is designed for contract environments and more modern spaces. Its range of models, finishes and structures allows a varied and flexible usage. Its most remarkable quality is its super-stackability, which enables maximum space optimisation.

A multifunctional product that's light and easy to move, based on a monoblock framework. It can be easily stacked in a cart with up to 30 units and up to 15 units in a vertical position.





LUMIA
LEAD TIME - 4-6 WEEKS

Get creative with solid timber legs in a choice of styles, including White Ash, Walnut Stain, and White or Black Woodgrain. Set against the powder-coat colours of Okidoki's steel and aluminum framework, the decision to complement or contrast is all yours.

LUMIA TROLLY
LEAD TIME - 4-6 WEEKS

Specially designed for convenient movement and storage of Unica and Lumia Sled Chairs

Unica Sled Chairs:
– Stack up to 10-15

TRAINING SPACES

QUATTRA LEAD TIME - 4-6 WEEKS

Super supportive and comfortable with its flexible adaptive mesh backrest, the Quattra chair is great for training and collaboration environments. Quattra is easily moved and easily stored when not in use.



MULTI-USE CHAIRS



NOOM 50 LEAD TIME - 10-15 WEEKS

The Noom family humanises spaces by encouraging communication and transmitting well-being. It is a comprehensive range of solutions suitable for any type of space.

Limitless customisation options. Its wide range of upholstery, finishes and structures make it a chair with no shortage of customisation options, ideal for workspaces and education environments alike.





OKIDOKI STOOL

LEAD TIME - 4-6 WEEKS

Get creative with solid timber legs in a choice of styles, including White Ash, Walnut Stain, and White or Black Woodgrain. Set against the powder-coat colours of Okidoki's steel and aluminum framework, the decision to complement or contrast is all yours.



BEND

LEAD TIME - 10-15 WEEKS

Bend soft seating allows you to create comfortable and informal meeting points that foster communication among employees. Its simple design and appearance invites you to take a seat.



BREAKOUT SPACES

SOCIAL LEARNING SPACES



Dot
Ottoman

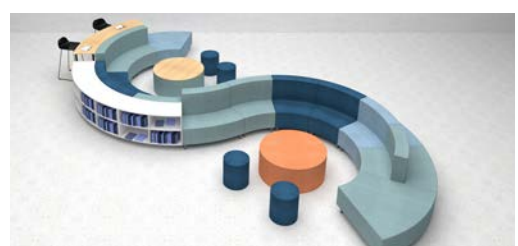
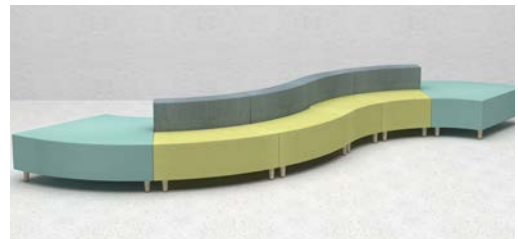
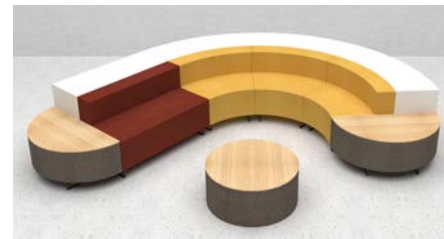
Hive
Stool

Orbit
Ottoman

ROTUNDA COLLECTION LEAD TIME - 6-8 WEEKS

The Rotunda Collection is modular; each individual piece can be used together to form versatile seating configurations that can be used in the classroom, libraries or breakout areas.

Combine Rotunda Inner and Outer Segments to form double-sided seating configurations, or match Rotunda Inner Segments with Rotunda Tables and Bookshelves for a multi-purpose unit.





BOOM COLLECTION

LEAD TIME - 6-8 WEEKS

The Rotunda Collection is modular; each individual piece can be used together to form versatile seating configurations that can be used in the classroom, libraries or breakout areas.

Combine Rotunda Inner and Outer Segments to form double-sided seating configurations, or match Rotunda Inner Segments with Rotunda Tables and Bookshelves for a multi-purpose unit.



AUDITORIUM

LEAD TIME - 10-15 WEEKS

Seat and back moulded polyurethane self-extinguishing foam, with ergonomic volume and great comfort. Wide range of finishes with different levels of fire resistance.

Models can be adapted to different lineal or curved layouts, according to regulations of use.

OUR STORY

WHEN IT ALL BEGUN
1987



1994
OPENED FIRST SHOWROOM

2005

FIRST PURPOSE BUILT WORKSHOP & SHOWROOM



2010
EXPLORING NEW TERRITORIES

STAYING AHEAD OF THE CURVE
2016



2019
LEVERAGING BEING TASMANIAN

REINVENTING LEARNING SPACES
2021



moving forward

FROM ONE GENERATION TO ANOTHER



1991

1995
FIRST SCREEN MANUFACTURER IN TASMANIA



BREAKTHROUGH PROJECT



2008

BENTLEY GOES NATIONAL
2015



2017
ONTO BRIGHTER AND BIGGER THINGS

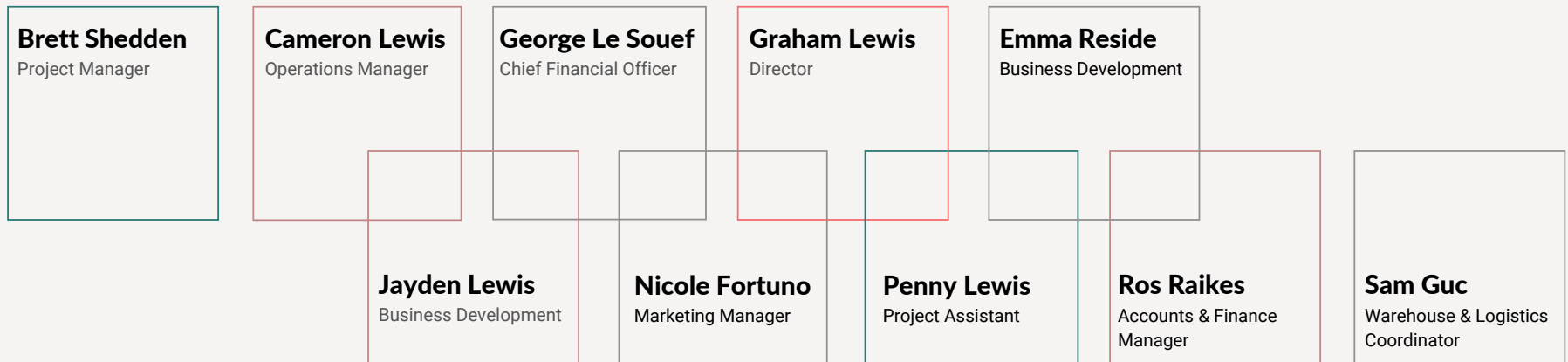


2020
STREAMLINING OUR PROCESS & SERVICE FROM CONCEPT TO COMPLETION.

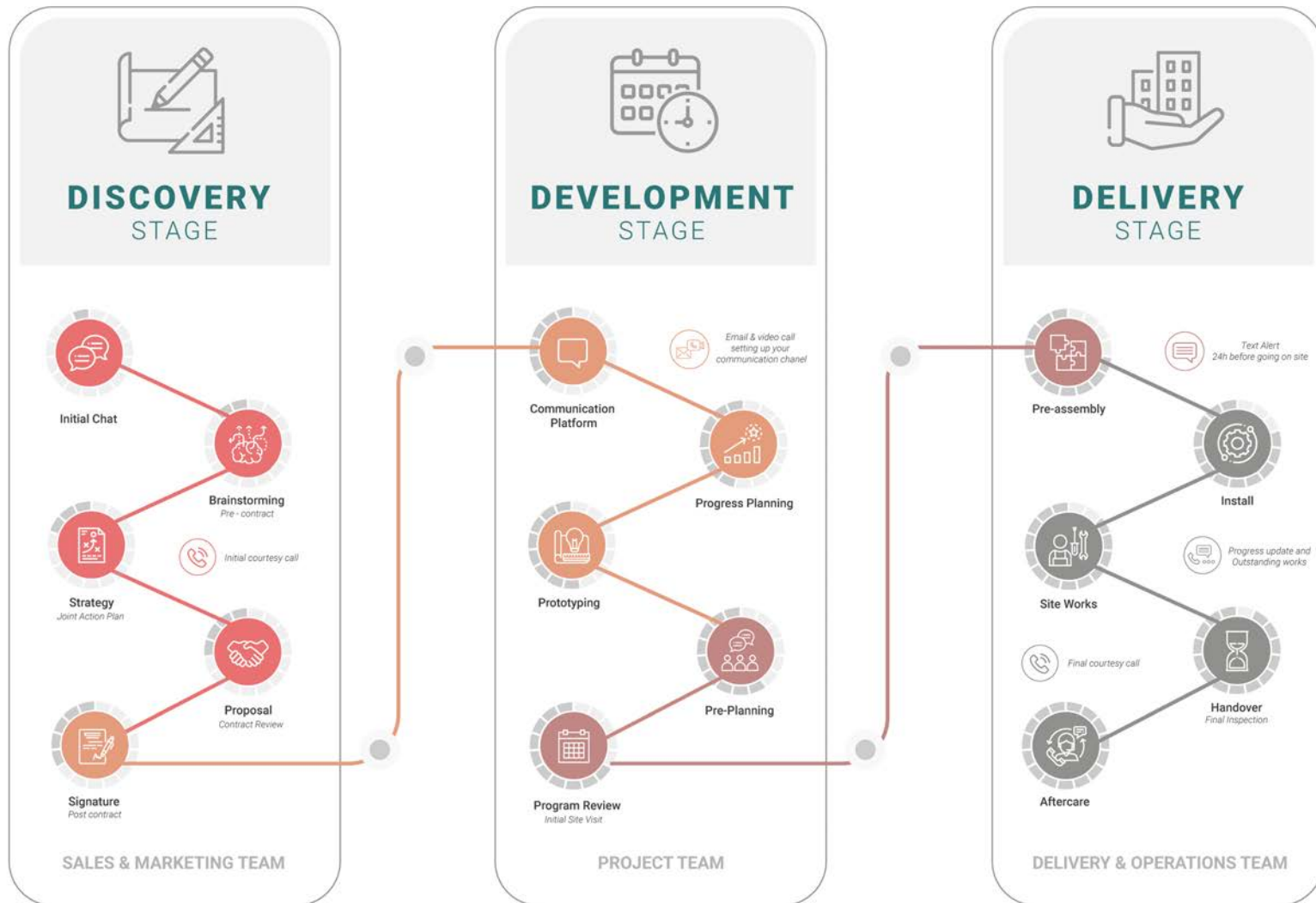
A story of how we thrive on pushing boundaries to deliver trends that will enhance your experience at work.

OUR TEAM

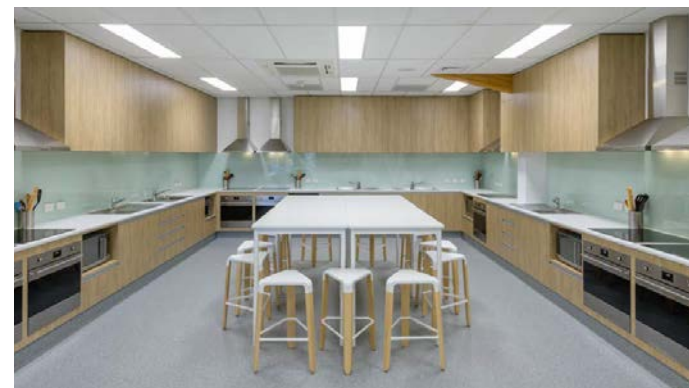
Behind every great company is an even greater team of people making it work. **Here's ours!**



OUR PROCESS



YOUR JOURNEY



One School Global

Location: Launceston, TAS
Size: 2,800sqm
Sector: Education

STRATEGY | PROJECT MANAGEMENT | FIT-OUT | FURNITURE | AFTERCARE



MS2

Location: University of Tasmania Hobart, TAS
Size: 6,000sqm
Sector: Education



Get in touch

hello@bentleyworkspaces.com

1300 789 922

Visit us

L2, 9 Elizabeth Street, Hobart TAS 7000

www.bentleyworkspaces.com